



MU Optical Fiber Connector

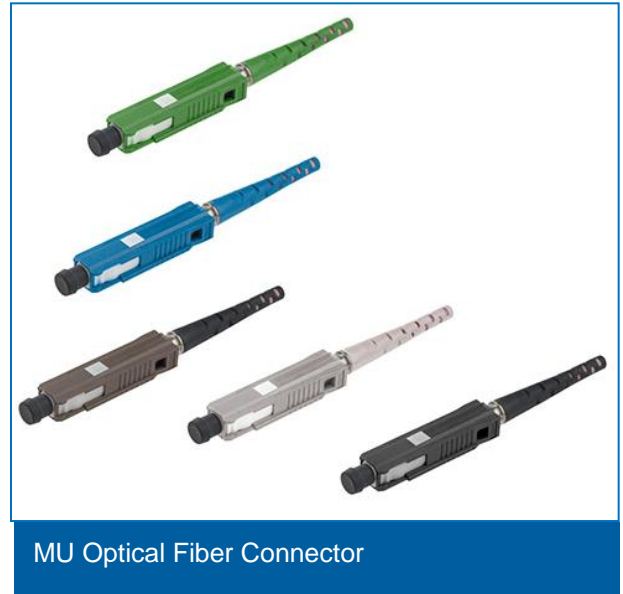
MU Optical Fiber Connector

Description

An optical fiber connector terminates the end of an optical fiber, and enables quicker connection and disconnection than splicing. The connectors mechanically couple and align the cores of fibers so light can pass. Better connectors lose very little light due to reflection or misalignment of the fibers.

Feature

- Low insertion loss
- High return loss
- Ease of installation
- Low cost
- Reliability
- Low environmental sensitivity
- Ease of use

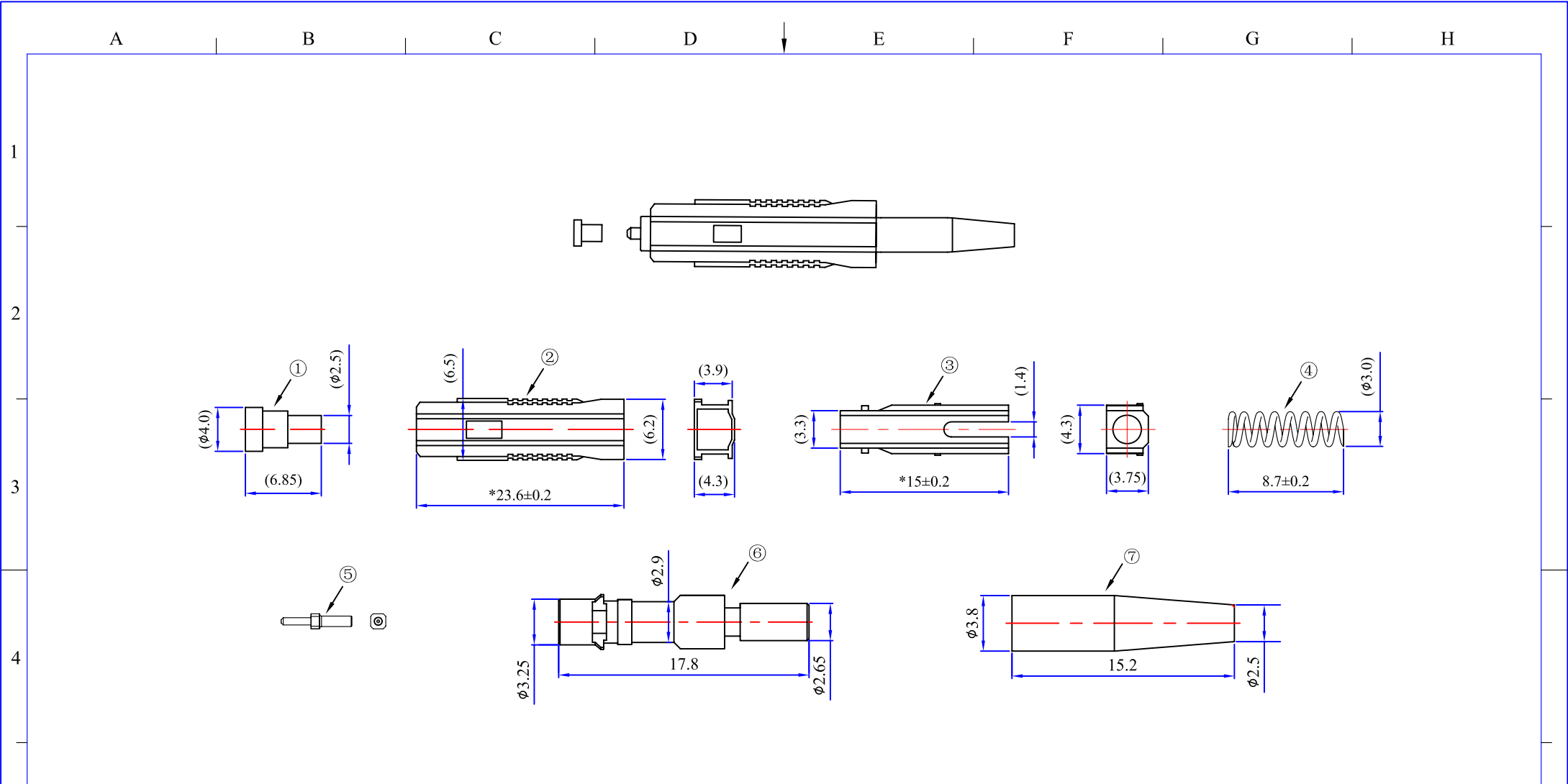


Application

- Telecom network
- Ethernet network
- Optical communication equipment

Specification:

Items	Single mode	Multi mode
Insertion Loss	$\leq 0.3\text{dB}$	$\leq 0.3\text{dB}$
Return Loss	$\geq 50\text{dB(UPC)}; \geq 60\text{dB(APC)}$	$\geq 30\text{dB}$
Ceramic ferrule spec	125.5um concentricity deviations: $< 1\mu\text{m}$	127um concentricity deviations: $< 3\mu\text{m}$
Insert-pull test	1000 times $< 0.3\text{dB}$	
Operation temperature	$-40^{\circ}\text{C} \sim +85^{\circ}\text{C}$	
Suitable fiber	PC/APC(9/125um)	PC(50/125um,62.5/125um)



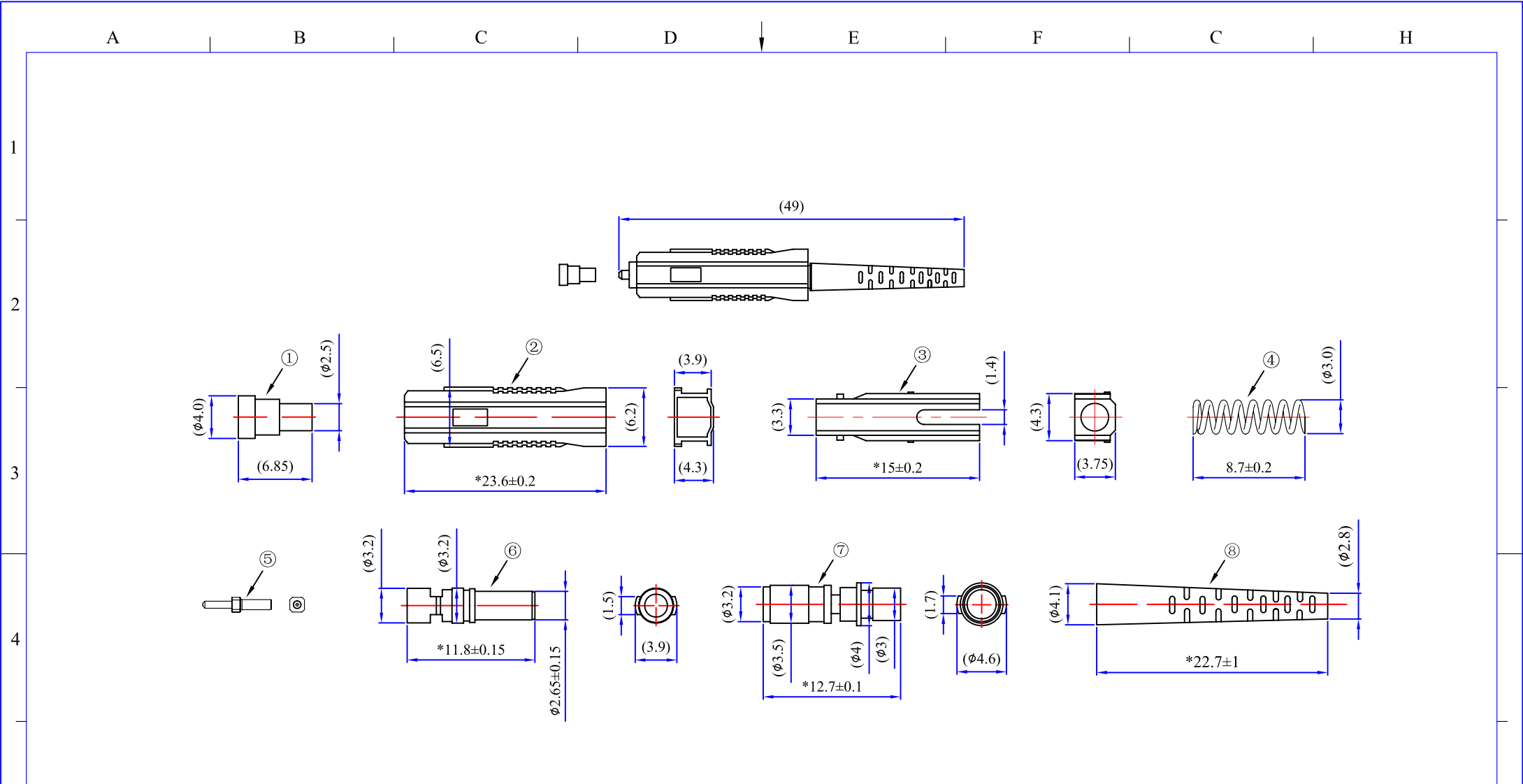
0.9mm MU type connector

Technical requirement:

1. Dust cap match well with the outer housing.
2. The other size should match with the real situation.

No.	Material name	Qty	note
1	dust cap	1	
2	outer housing	1	
3	inner housing	1	
4	MU spring	1	
5	ferrule with flange	1	
6	stop ring	1	
7	boot	1	

Title			
0.9mm MU connector			
Drawing	Steven	Item No	
Check	Henry	Drawing No:	
Approval	Williams		
Date	2018	Page: 1-1	曦和光电科技有限公司 XH Opto Tech Co.,Ltd



Technical requirement:

1. Dust cap match well with the outer housing.
2. The other size should match with the real situation.

2.0mm MU type connector

No.	Material name	Qty	note
1	dust cap	1	
2	outer housing	1	
3	inner housing	1	
4	MU spring	1	
5	ferrule with flange	1	
6	stop ring	1	
7	sleeve	1	
8	boot	1	

Title		2.0mm MU connector	
Drawing	Steven	Item No	
Check	Henry	Drawing No:	
Approval	Williams		
Date	2018	Page: 1-1	職和光电科技有限公司 XH Opto Tech Co.,LTD